

City Centre Active Travel Connections to Interchange Phase 1



CPC CIVILS have been awarded the
City Centre Active Travel Connections to Interchange Phase 1 project
by Birmingham City Council.

CPC CIVILS are delighted to be working with the City Council on this prestigious project.



Refurbishment of the Victoria Square fountain steps have now been completed to the point that the area is now open to the public.

WORKS TO NEW STREET, TEMPLE STREET, LOWER TEMPLE STREET, BENNETTS HILL, ETHEL STREET, EDEN PLACE, CHAMBERLAIN PASSAGE

INFRASTRUCTURE IMPROVEMENT WORKS TO NEW STREET, TEMPLE STREET, LOWER TEMPLE STREET, BENNETTS HILL, ETHEL STREET, EDEN PLACE, CHAMBERLAIN PASSAGE CPC CIVILS IS WORKING ON BEHALF OF BIRMINGHAM CITY COUNCIL TO ENHANCE THE CITY CENTRE. WE ARE IMPROVING THE PUBLIC REALM BY INSTALLING NEW GRANITE SURFACES, ALONG WITH INSTALLING NEW AND IMPROVED LIGHTING, DRAINAGE AND STREET FURNITURE. THESE WORKS WILL INVOLVE SMALL TEAMS OF HIGHLY SKILLED OPERATIVES REMOVING THE EXISTING PAVING, UPGRADING THE DRAINAGE SYSTEM AND SUB-BASE AND THEN INSTALLING NEW PAVING ACROSS ALL THESE AREAS.

Update: Works Progress to 7th June / Works Planned to 21st June 2026

Note: Some work in the footways to be undertaken at night.

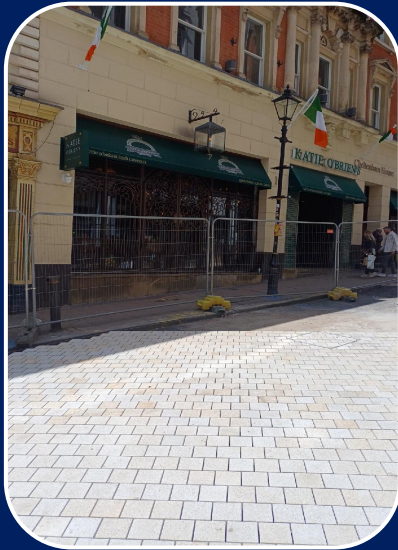
Temple Street

PROGRESS

- Installation of the new paving to form the footway between Fumo and San Carlo are in the final stages. The removal of the old footway between San Carlo and Katie O'Brien's (further down the street) has also begun and the new paving installation in the central carriageway (Trocadero to Moss Bros) also nears completion.
- To ensure that access is maintained for all the affected businesses along the footway strip, footbridges have been installed to connect their doorways to the central carriageway.

PLANNED

- Over the next fortnight works will also begin to install a new Hostile Vehicle Mitigation (HVM) barrier outside Katie O'Brien's. The HVM installation will be completed in two phases, with the initial preparation works being completed by 14 June, followed by the final installation activities which are targeted for completion by 22 June.



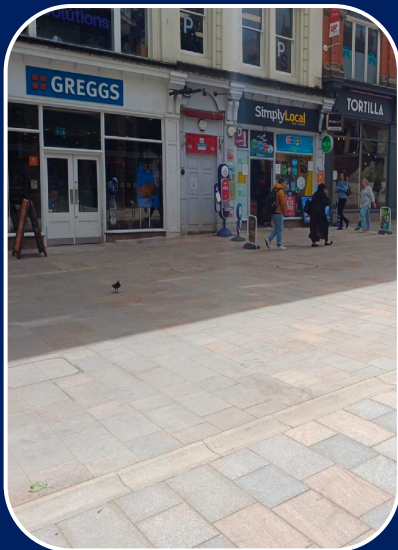
New Street (Nando's)

PROGRESS

- The photograph (left) was taken recently in New Street.
- Several businesses including Tortilla, Simply Local, Greggs, Caffe Nero, Medicine Bakery and German Doner Kebab, now have new paving installed to form the central carriageway and footways.
- Heras fencing has now been removed from much of this area.

PLANNED

- Works will continue with the focus on completing the paving installation works on both footways between German Doner kebab and Plasma Doner Centre and between Fat Burgers and Eat 4 Less. Excavation and preparatory work in the old footways of both areas is well underway.



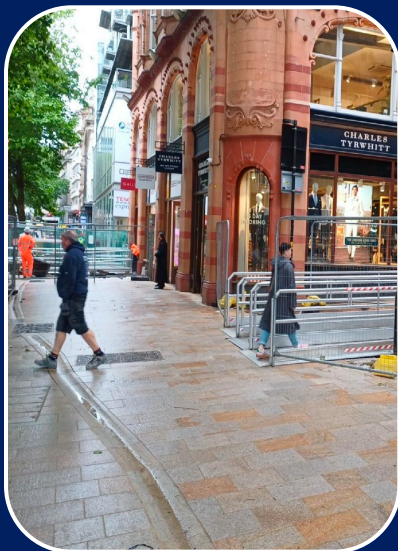
New Street (Apple)

PROGRESS

- With significant progress achieved in the section of works between Lloyds Bank and Bandai Namco meaning much of the work in the central carriageway is now completed, attention will now be focused on removal of the old footway adjacent to Tesco Express.
- In addition, excavation and related civil engineering works will commence on the footway between Apple and Mappin & Webb to prepare the strip for the installation of the paving that will form the new footway.

PLANNED

- Attention will be focused on completing the final works on the Hostile Vehicle Mitigation (HVM) Barrier.



IMPORTANT ANNOUNCEMENT

CHANGE OF REFUSE COLLECTION POINT FOR BUSINESSES IN TEMPLE STREET AND BUSINESSES IN BENNETTS HILL THAT USE TEMPLE PASSAGE AS THEIR REFUSE COLLECTION POINT

To enable the forthcoming works in New Street to be completed as planned, it is no longer viable for the area (adjacent to Starbucks and Tesco Express main entrance) to be used as a refuse collection point.

We are asking all businesses located in Temple Street that would normally use Temple Passage as a refuse collection point, and all businesses in Bennetts Hill that would normally use Temple Passage as a refuse collection point, to return to using Temple Passage as their primary refuse collection point.

To assist with refuse collections, we will create a new refuse collection point in a designated zone (highlighted in the diagram left) located at the top of Temple Street.

We are asking all businesses affected by this change to please notify their refuse collection companies accordingly.

This change is targeted to come into effect by no later than 12 June 2026.

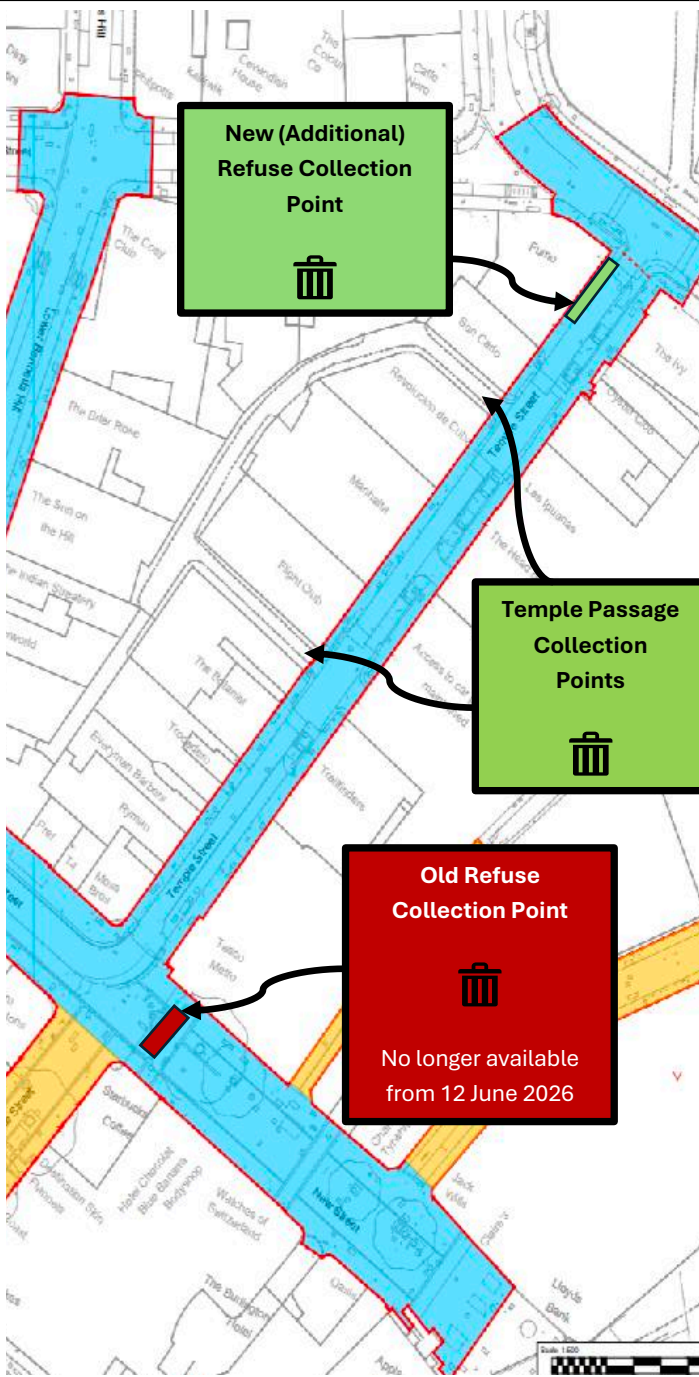
Please be advised that any dumpsters or wheelie bins found in the previously designated refuse collection point in New Street following 12 June 2026 may be removed by Birmingham City Council.

Please contact our Public Liaison Officer if you have any queries or concerns regarding this matter.

Tel: 07530 564 367

or

Email: peace@cpccivils.net



CITY CENTRE ACTIVE TRAVEL CONNECTIONS TO INTERCHANGE PHASE 1

High-quality public spaces will be created to enhance the city's environment and connectivity. At peak times access and loading will be restricted within the city centre to make it easier, more welcoming and safer for pedestrians and more accessible to those with mobility issues.

The works programme will also include permanent and less intrusive hostile vehicle security measures (HVM) as part of a comprehensive safety and security strategy for the city centre.

These improvements will create a lasting legacy by providing a safe, attractive and welcoming pedestrianised environment for all users to enjoy.



Find out more at the [CPC Civils Website](https://www.cpccivils.net)

Stakeholder Engagement Drop-In Session

Invitation

CPC Civils invites local businesses to discuss the ongoing programme of construction in Victoria Square, New Street, Temple Street, Lower Temple Street, Bennetts Hill, Ethel Street, Chamberlain Passage, Eden Place.



Every Wednesday.
11am – 1pm



CPC Civils
70 New Street, Birmingham, B2 4DU

For more information Tel: 07530 564 367 or Email: bcc.citycentreworks@cpccivils.net



Email:

transport.projects@birmingham.gov.uk

For 24-hour Emergency Help Line

Please Call 0121 303 4149



Email: bcc.citycentreworks@cpccivils.net

For the Out of Hours Help Line

Please Call 01865 415 252



Funded by
UK Government



West Midlands
Combined Authority



ADDRESS 11 Hockley Court, 2401 Stratford Road, Hockley Heath, Solihull, B94 6NW
WEBSITE www.cpccivils.net EMAIL info@cpccivils.net PHONE 0121 766 7019