

City Centre Active Travel Connections to Interchange Phase 1



CPC Civils have been awarded the
City Centre Active Travel Connections to Interchange Phase 1 project
by Birmingham City Council.

CPC Civils are delighted to be working with the City Council on this prestigious project.



WORKS TO NEW STREET, TEMPLE STREET, LOWER TEMPLE STREET, BENNETTS HILL, ETHEL STREET, EDEN PLACE, CHAMBERLAIN PASSAGE

INFRASTRUCTURE IMPROVEMENT WORKS TO NEW STREET, TEMPLE STREET, LOWER TEMPLE STREET, BENNETTS HILL, ETHEL STREET, EDEN PLACE, CHAMBERLAIN PASSAGE CPC CIVILS IS WORKING ON BEHALF OF BIRMINGHAM CITY COUNCIL TO ENHANCE THE CITY CENTRE. WE ARE IMPROVING THE PUBLIC REALM BY INSTALLING NEW GRANITE SURFACES, ALONG WITH INSTALLING NEW AND IMPROVED LIGHTING, DRAINAGE AND STREET FURNITURE. THESE WORKS WILL INVOLVE SMALL TEAMS OF HIGHLY SKILLED OPERATIVES REMOVING THE EXISTING PAVING, UPGRADING THE DRAINAGE SYSTEM AND SUB-BASE AND THEN INSTALLING NEW PAVING ACROSS ALL THESE AREAS.

Update: Works Progress to 24th May / Works Planned to 7th June 2026

Note: Some work in the footways to be undertaken at night.



TEMPLE STREET

Work to form the new carriageway has progressed from the top of the street to as far as Trailfinders - more than two thirds of the way down.

Both the private and public car parks are accessible via Temple Row only. Both entrances into Temple Passage are also accessible with vehicular access via Temple Row only.

The new paving installation in the footway adjacent to Fumo is also well underway (see picture left) and is set to be progressed, with the old footway between San Carlo and Katie O'Brien's also earmarked for removal during the next fortnight.



NEW STREET (NANDO'S)

While the new paving work to form the central carriageway continues well beyond the Ethel Street/New Street junction, work has also commenced in the footways.

New paving is being installed between Tortilla and Eat 4 Less. At the same time the removal of the old footway between Nando's and New Street chambers has been completed. The concrete slab has been poured in that area enabling us to now shift our focus to the installation of the new paving.

Further down the street between New Street Chambers and Blood Donor Centre, the removal of the old footway is set to begin.

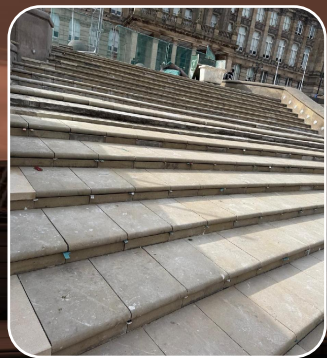


NEW STREET (APPLE)

Apple has become the first building frontage in the area to see the majority of work completed enabling the footbridge and fencing to be removed. (See picture left).

With much of the new paving installation to form the central carriageway now complete, efforts can now turn to the footways on either side.

Over the next fortnight our team will be focusing on completing the work required in the footway between Charles Tywhitt and Tesco Express.



VICTORIA SQUARE

Work to complete the refurbishment of the fountain steps are in the final stages. Work over the next fortnight will focus on finishing all outstanding work and clearing the work site.

Very soon BOTH sides of the fountain steps will be open to the public.

Stakeholder Engagement Drop-In Session

Invitation

CPC Civils invites local businesses to discuss the ongoing programme of construction in Victoria Square, New Street, Temple Street, Lower Temple Street, Bennetts Hill, Ethel Street, Chamberlain Passage, Eden Place.



Every Wednesday.
11am – 1pm



CPC Civils
70 New Street, Birmingham, B2 4DU

For more information Tel: 07530 564 367 or Email: bcc.citycentreworks@cpccivils.net



Email:

transport.projects@birmingham.gov.uk

For 24-hour Emergency Help Line

Please Call 0121 303 4149



Email: bcc.citycentreworks@cpccivils.net

For the Out of Hours Help Line

Please Call 01865 415 252



Funded by
UK Government



West Midlands
Combined Authority



ADDRESS 11 Hockley Court, 2401 Stratford Road, Hockley Heath, Solihull, B94 6NW
WEBSITE www.cpccivils.net EMAIL info@cpccivils.net PHONE 0121 766 7019