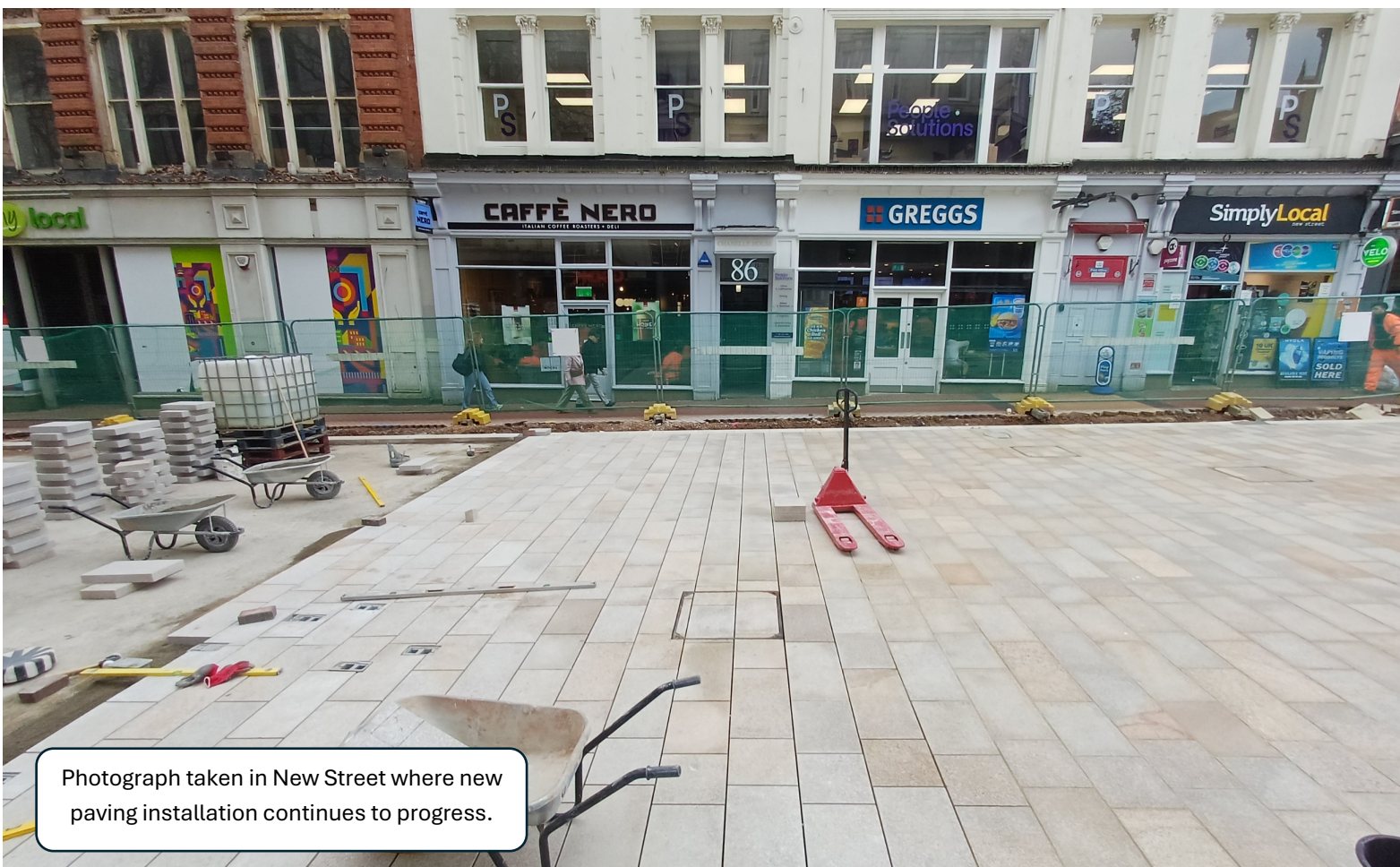


# City Centre Active Travel Connections to Interchange Phase 1



CPC CIVILS have been awarded the  
City Centre Active Travel Connections to Interchange Phase 1 project  
by Birmingham City Council.

CPC CIVILS are delighted to be working with the City Council on this prestigious project.



## WORKS TO NEW STREET, TEMPLE STREET, LOWER TEMPLE STREET, BENNETTS HILL, ETHEL STREET, EDEN PLACE, CHAMBERLAIN PASSAGE

INFRASTRUCTURE IMPROVEMENT WORKS TO NEW STREET, TEMPLE STREET, LOWER TEMPLE STREET, BENNETTS HILL, ETHEL STREET, EDEN PLACE, CHAMBERLAIN PASSAGE CPC CIVILS IS WORKING ON BEHALF OF BIRMINGHAM CITY COUNCIL TO ENHANCE THE CITY CENTRE. WE ARE IMPROVING THE PUBLIC REALM BY INSTALLING NEW GRANITE SURFACES, ALONG WITH INSTALLING NEW AND IMPROVED LIGHTING, DRAINAGE AND STREET FURNITURE. THESE WORKS WILL INVOLVE SMALL TEAMS OF HIGHLY SKILLED OPERATIVES REMOVING THE EXISTING PAVING, UPGRADING THE DRAINAGE SYSTEM AND SUB-BASE AND THEN INSTALLING NEW PAVING ACROSS ALL THESE AREAS.

# WORKS PROGRESS

## MON 16<sup>th</sup> MARCH TO SUN 12<sup>th</sup> APRIL



### New Street (Apple)

With the concrete pour (left) complete and the concrete slab in place, installation of the new paving has now commenced.



### Victoria Square

The team completed the final stages of the refurbishment works on the right side of the steps.

Work has now commenced on the left side.



### New Street (Nandos)

With the concrete slab poured the team have been able to commence the new paving installation and begin to install the new street furniture including the benches and cycle racks.



### Temple Street

Installation of the new paving continues to be progressed.

The two pictures show the old carriageway (left) and the new carriageway taking shape (right).



# Planned Works

## Monday 13<sup>th</sup> April to Sunday 26<sup>th</sup> April 2026

### CPC Civils will:

#### Victoria Square (Left Hand Side of Fountain)

- Continuing to number and carefully remove steps for transfer to the storage yard.
- Continue manufacture of steps that require replacement.
- Make good the concrete foundation beneath the steps to prepare for re-laying of steps.

#### Temple Street

- Continue to install new paving.
- Commence break out of carriageway and install Tarmac base course.

#### *New Street (Apple)*

- Continue installation of new paving.

#### *New Street (Nando's)*

- Continue installation of new paving.
- Continue installation of new drainage.
- Pour concrete slab to prepare for new paving installation.
- Continue installation of retention sockets for street furniture.

We would like to thank local businesses and stakeholders for their continued cooperation in keeping footways clear of waste sacks, A-boards and refuse bins.

Your efforts are helping to maintain safe, accessible routes for pedestrians. We kindly ask for your ongoing support in sustaining these standards, ensuring the area remains welcoming and easy to navigate for everyone.



# Stakeholder Engagement Drop-In Session

## Invitation

CPC Civils invites local businesses to discuss the ongoing programme of construction in Victoria Square, New Street, Temple Street, Lower Temple Street, Bennetts Hill, Ethel Street, Chamberlain Passage, Eden Place.



Every Wednesday.  
11am – 1pm



CPC Civils  
70 New Street, Birmingham, B2 4DU

For more information Tel: 07530 564 367 or Email: [bcc.citycentreworks@cpccivils.net](mailto:bcc.citycentreworks@cpccivils.net)



Email:

[transport.projects@birmingham.gov.uk](mailto:transport.projects@birmingham.gov.uk)

For 24-hour Emergency Help Line

Please Call 0121 303 4149



Email: [bcc.citycentreworks@cpccivils.net](mailto:bcc.citycentreworks@cpccivils.net)

For the Out of Hours Help Line

Please Call 01865 415 252



Funded by  
UK Government



West Midlands  
Combined Authority



ADDRESS 11 Hockley Court, 2401 Stratford Road, Hockley Heath, Solihull, B94 6NW  
WEBSITE [www.cpccivils.net](http://www.cpccivils.net) EMAIL [info@cpccivils.net](mailto:info@cpccivils.net) PHONE 0121 766 7019