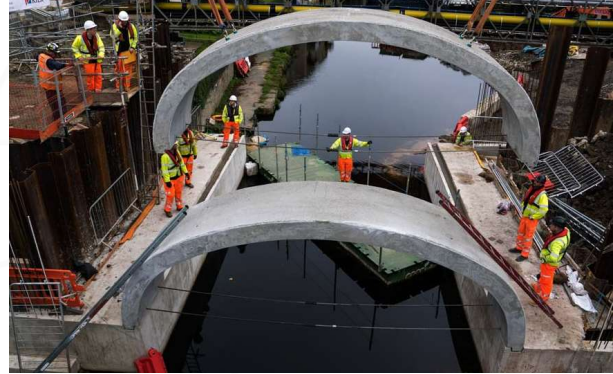


Elland Bridge

Client: Kier for Canal & River Trust

Project Value: £3m

Project Type: Waterway Engineering & Bridge Construction



Our workforce has far-reaching experience in water engineering, just one of the facts that saw us awarded the Elland Bridge project in December 2015. The scheme saw the complete renovation of a listed canal bridge near the city of Leeds. The former 19th century bridge run over the River Calder and the Calder and Hebble Navigation before being destroyed by devastating floods. The floods of Boxing Day 2015 caused irreversible damage to the iconic structure.

Our team led the demolition and rebuild of Elland Bridge, which now consists of seven new pre-cast modular arches. Upon installation these arches were clad with existing stone in accordance with approved project plans. In addition to being charged with the installation of the new bridge, our team also had to accommodate services originally passing through the bridge during the 14-month project. The Bailey Bridge was erected as a temporary solution for diverted services such as gas, water, high/low voltage telecoms and fibre optics.

